

# MONTHLY MEMBERSHIP PROGRESS REPORT

LOCATION TEXAS

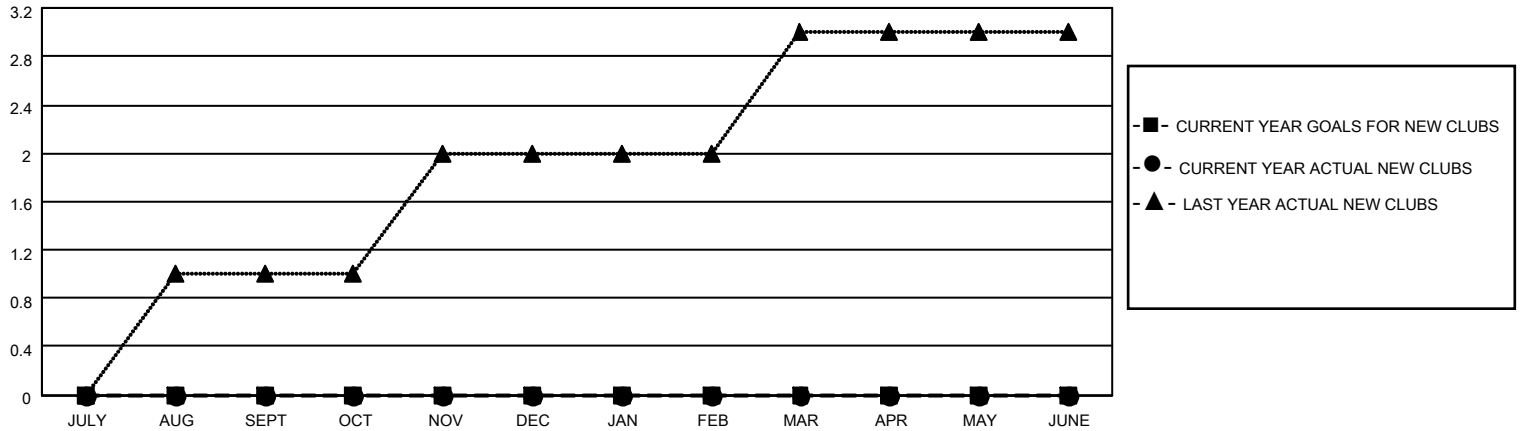
District 2 X2

Results as of: 6/30/2021

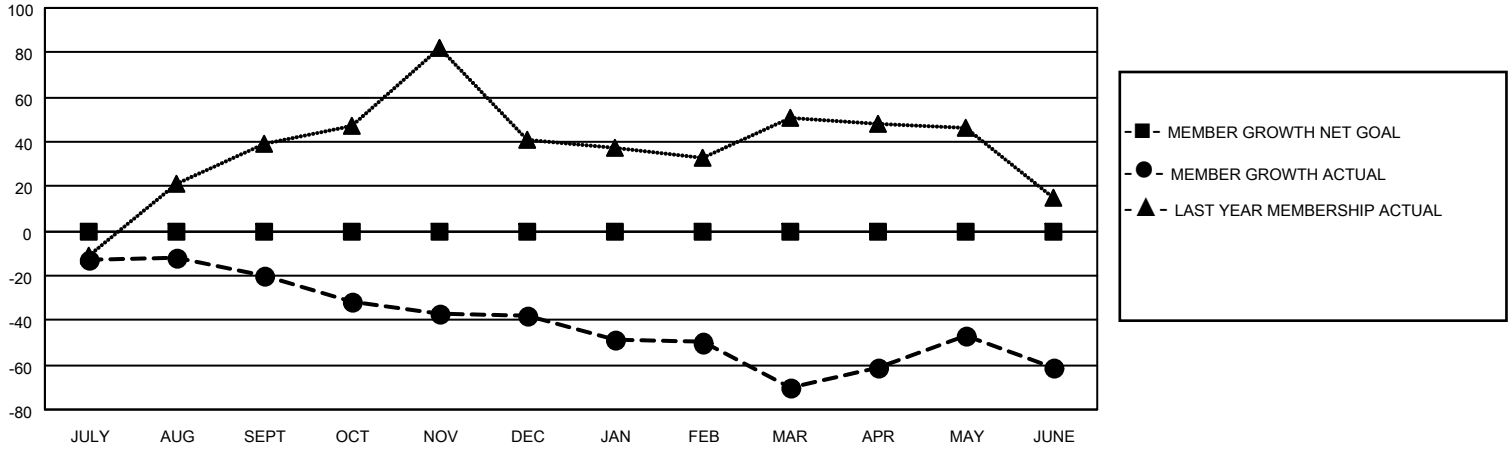
Clubs			
RESULTS FOR 2020-2021			
QUARTER	NEW CLUB GOAL	NEW CLUBS	DROPPED CLUBS
JULY/AUG/SEPT	0	0	2
OCT/NOV/DEC	0	0	0
JAN/FEB/MAR	0	0	1
APR/MAY/JUNE	0	0	0

Members			
RESULTS FOR 2020-2021			
QUARTER	MEMBER GROWTH NET GOAL	MEMBER GROWTH ACTUAL	DROPPED MEMBERS ACTUAL (including transfers)
JULY/AUG/SEPT	0	26	44
OCT/NOV/DEC	0	44	58
JAN/FEB/MAR	0	20	49
APR/MAY/JUNE	0	55	42

**GOALS AND ACTUAL NEW CLUBS CUMULATIVE**



**GOALS AND ACTUAL MEMBERS CUMULATIVE**



**DROPPED CLUBS: 3**

26 CLUBS OF 42 ADDED 1 OR MORE NEW MEMBERS

**GENDER DISTRIBUTION**

MALE 568 (59.11%)  
FEMALE 393 (40.89%)

**DROPPED MEMBERS**

[CLICK HERE FOR CUMULATIVE MEMBERSHIP DATA](#)

DECEASED	13
CLUB CANCELLED	10
OTHER	170
<b>TOTAL</b>	<b>193</b>

TOTAL FAMILY UNIT MEMBERS	166
FAMILY MEMBERS PAYING HALF DUES	85